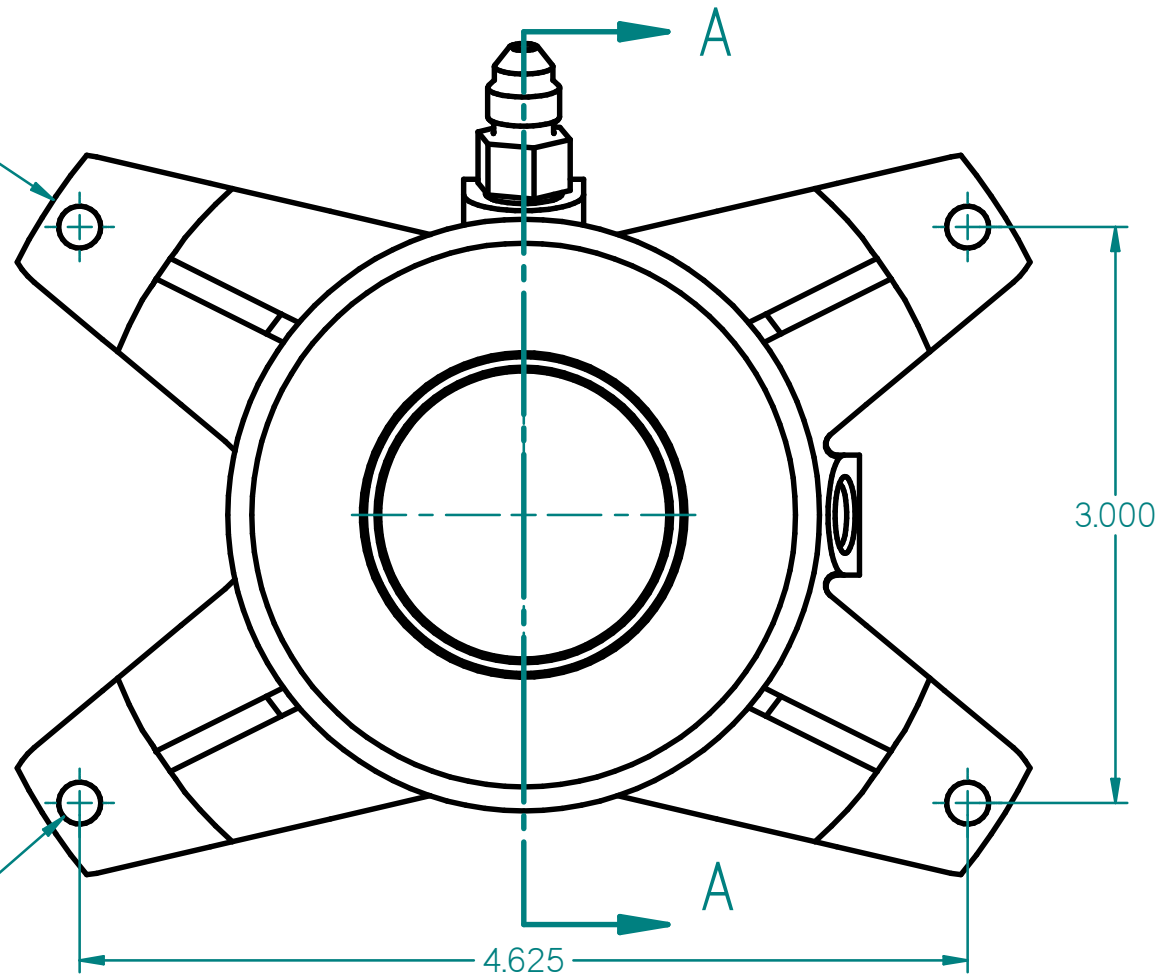
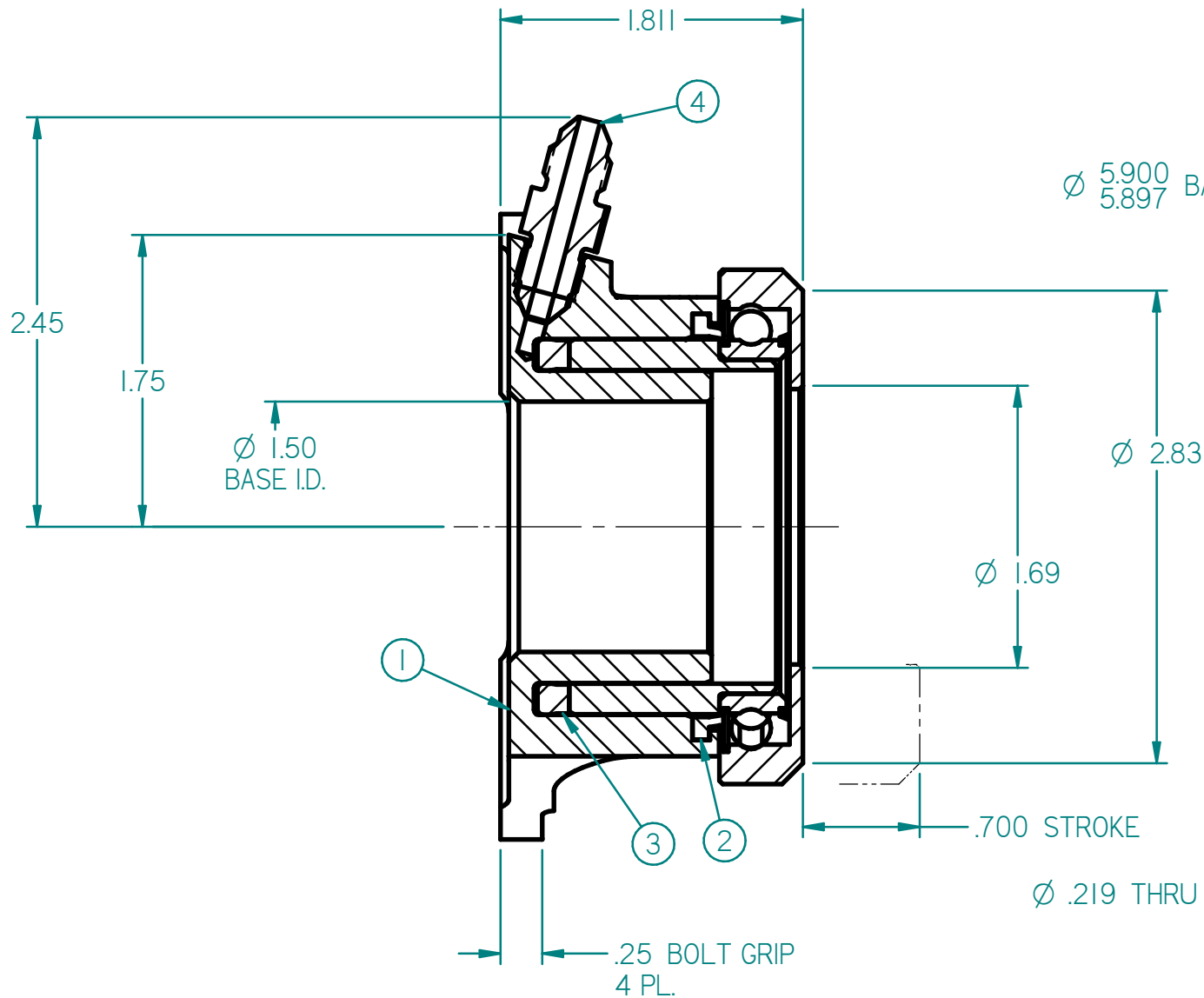


- INSTALLATION NOTES:
- 1. USE ONLY WITH DOT-3 OR DOT-4 BRAKE FLUID.
 - 2. NO INTERNAL TRAVEL LIMITER. MUST BE USED WITH CLUTCH PEDAL STOP.
 - 3. SEAL REBUILD KIT = 62-905.
 - 4. SEAL INSTALLATION TOOL = 96-002.
 - 5. HYDRAULIC AREA = 1.215 SQ IN.
 - 6. EITHER PORT MAY BE USED FOR FEED OR BLEED.
 - 7. ORIENTATE BLEED PORT TO WITHIN 10 DEGREES OF TOP CENTER TO FACILITATE BLEEDING PROCESS.
 - 8. BOTH PORTS 3/8-24 UNF X .28 THREAD DEPTH.

ITEM	PART NUMBER	DESCRIPTION	QTY
1	62-1503	HYDRAULIC BASE	1
2	62-617	WIPER	1
3	62-614	HYDRAULIC SEAL	1
4	73-820	FITTING, AN-3	2
5	62-6100	PISTON	1
6	62-618	BEARING	1

"This document contains proprietary information of TILTON ENGINEERING, INC., and its receipt or possession does not convey the rights to reproduce, disclose its contents, or to manufacture, use or sell anything it may describe. Reproduction, disclosure, or use without specific written authorization of TILTON ENGINEERING INC. is strictly forbidden."



SECTION A-A

TILTON ENGINEERING, INC.

FAX 805/688-2745

25 EASY STREET, P.O. BOX 1787, BUELLTON, CA 93427 805/688-2353

TITLE:

HYDRAULIC RELEASE BEARING ASSEMBLY
FLAT FACED BEARING, TILTON BELLHOUSING MOUNT

DRAWN BY WAHL

P/N 60-5100

CHKD

DATE 12/30/2019

SCALE 1:1

SHEET 1 OF 1

SIZE B

DWG 7262

REV NC

tiltonENGINEERING INC.