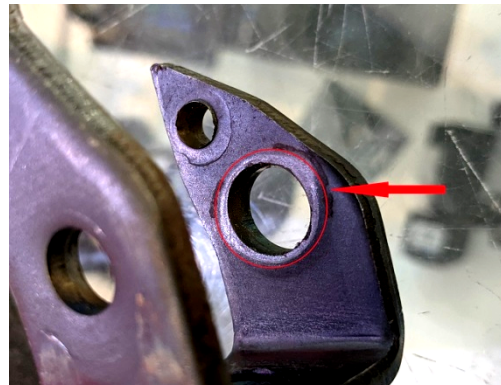


## Instructions

Thank you for purchasing this bush set from Racer Industries.

This is a precision replacement unit for the factory bush that will virtually eliminate free-play in the assembly and aid in more accurate and faster shifts. The factory bushes have very loose tolerance to allow for manufacturing variances. The new bushes have tolerance to .01mm, so will require some special attention when fitting for the best results. Please make sure of the following steps.

**1** – Remove manufacturing burrs and rough edges from the factory lever, particularly on the inside surfaces. This may require use of a file or some coarse emery cloth (see image).



Remove Burs inside shifter fork – Both sides

**2** – Remove any paint, rust or dirt from all surfaces that contact the bushes or bolts. This is important as the new bushes have no spare tolerance.

**3** – Take care when fitting the bushes to the solid pin on the shifter base. These are nearly a size-for-size fit. You will need to make sure there is no bur on the Circlip groove, and the base is clean. The bushes may need to be lightly pressed on using an appropriately sized socket or similar.



Remove Paint – All surfaces

**4** – Coat the bushes with a light film of assembly grease or anti seize compound.

**5** – When correctly fitted the two pivot bolts will be able to be correctly tightened to 48 Nm and there should be no binding in any direction.

**If you require any assistance please call Racer Industries – 1300 722 374 or email [sales@racerindustries.com.au](mailto:sales@racerindustries.com.au)**